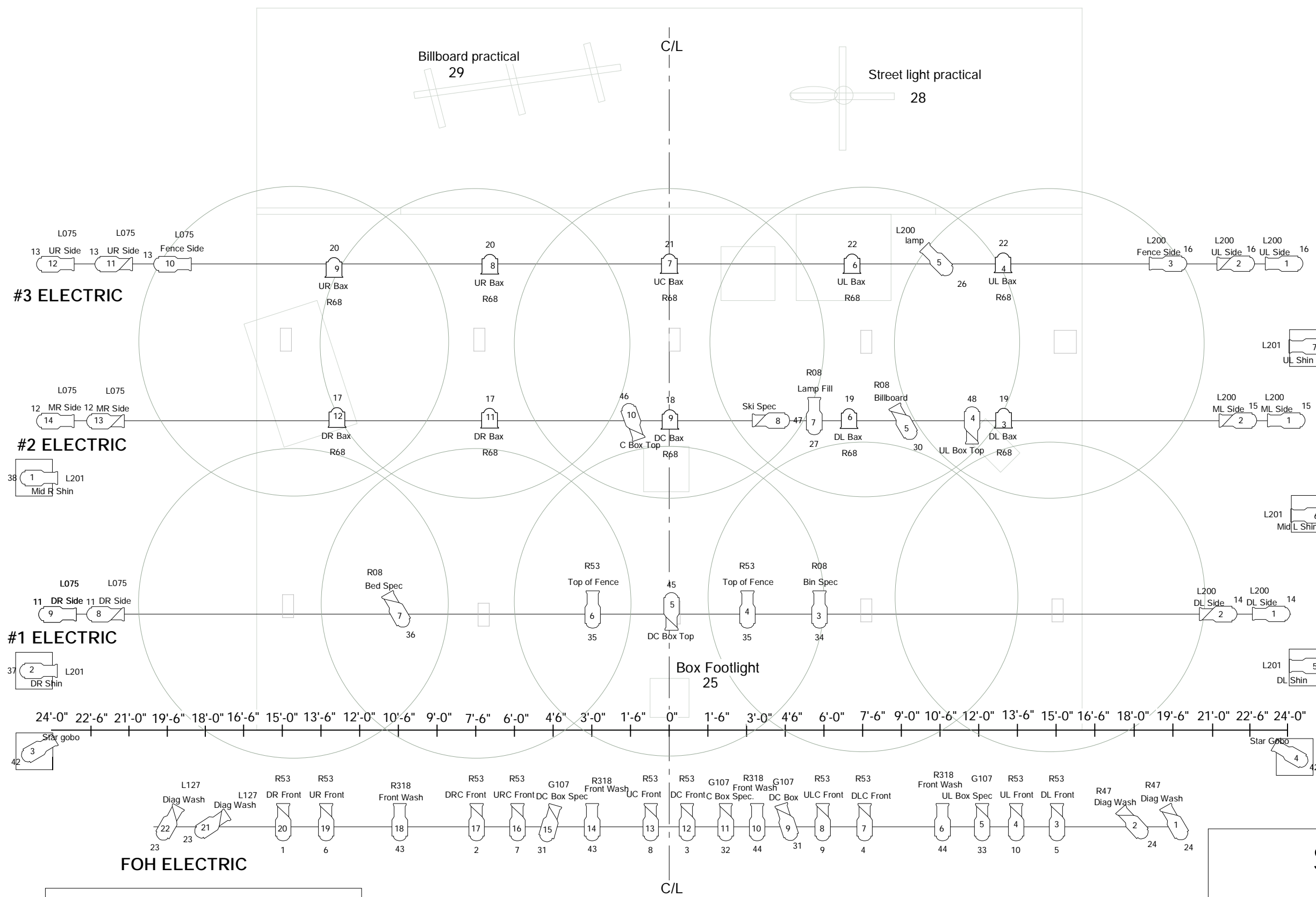


NOTES

IF THROW DISTANCE TO STAGE IS LESS THAN 20', 6X9'S (OR EQUIVALENT) SHOULD BE SUBSTITUTED FOR 6X12'S.

SOURCE 4 PARS, PARNELS OR PAR 64'S MAY BE USED IN PLACE OF FRESNELS. IF ELECTRIC TRIM HEIGHT IS 23' OR HIGHER, PARS SHOULD BE MFLs. IF UNDER 23', PARS SHOULD BE WFLs. 1KW INSTRUMENTS SHOULD BE USED FOR TOP LIGHT WHEN AVAILABLE.







#3 ELECTRIC

#2 ELECTRIC

#1 ELECTRIC

FOH ELECTRIC

KEY

-  6x12 or equivalent
-  6x9 or equivalent
-  6" fresnel or Par 64 or equivalent
-  Color Purpose Unit# Channel

SNOWFLAKE

created by:

Gale LaJoye

LIGHT PLOT

lighting design:
Rebecca Fuller

scale: 1/4" = 1'-0"

12/11/03